

Positive Relationships
Positive Outcomes

Welcome to Moorebank

High School

Year 6 2020

INFORMATION EVENING

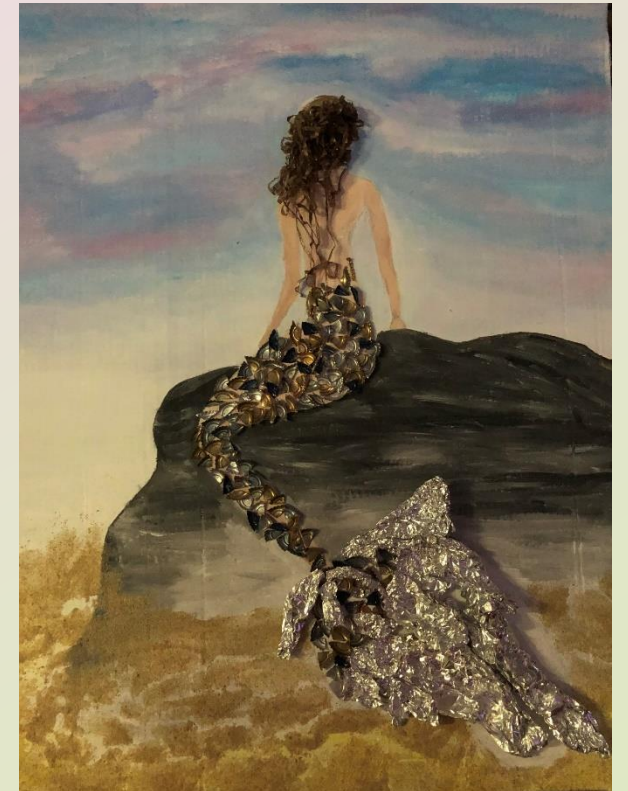


Our School

Positive Relationships Positive Outcomes

Inclusive, Cohesive & Positive

- ▶ Selective and comprehensive high school
- ▶ 1065 students
- ▶ 100 staff – teaching and ancillary
- ▶ 75% EAL/D
- ▶ Situated in a very unique environment
- ▶ Very strong partnerships with our community, in particular our partner primary schools, local industry, TAFE and universities
- ▶ Strongly encourage parental participation in sharing their child's learning and value input into school planning
- ▶ We value learning and celebrate student achievement
- ▶ Strongly advocate for student leadership and student voice



Our Vision Statement



- Instructional leadership will guide and support staff to enhance effective, evidence-based practices in teaching and wellbeing, in order to provide all students with the opportunities to become empowered, responsible, active and generous citizens. Through a culture of high expectations, explicit teaching and effective feedback our school will optimise the learning progress of all students and develop mindsets that value the pursuit of life-long learning.

Our Focus

- ▶ Literacy
- ▶ Numeracy
- ▶ HSC data
- ▶ High Potential and Gifted Education
- ▶ WALT
- ▶ WILF
- ▶ The Big Q
- ▶ STEM
- ▶ Wellbeing
- ▶ Student leadership / voice



Our Staff

Principal

Ms Grego

Deputy Principals

Ms Leong

Ms Roberts

Mr Sansom

Deputy Principal Mentors

Ms Debreczeni (term 1)

Mr Horsley (terms 1 – 3)



Head Teachers

- HT Administration – Mr D Clark
- HT CAPA – Mr Cardillo-Zallo
- HT English – Ms Baghdadi / Ms Carney
- HT HSIE - Ms Skelton
- HT Mathematics – Mr Tsaousis
- HT PDHPE - Ms Xenakis
- HT Secondary Studies – Ms Cooper
- HT Science – Ms Jones
- HT TAS– Mr S Clark
- HT Teaching and Learning - Ms Paring
- HT Wellbeing - Ms Rombi / Mr Ghossain
- SAM – Ms Nicholls

MHS Expectations and Values



➤ Our school also has five core expectations that help us to realise that learning is our number one value. These expectations express what we believe and how we behave, and are encapsulated in the honourable word, BRAVE. The expectations are:

- **B**e generous
- **R**espectful and responsible
- **A**ct safely
- **V**alue learning and
- **E**xcellence

Pride in the School & Student Achievements

Range of leadership programs

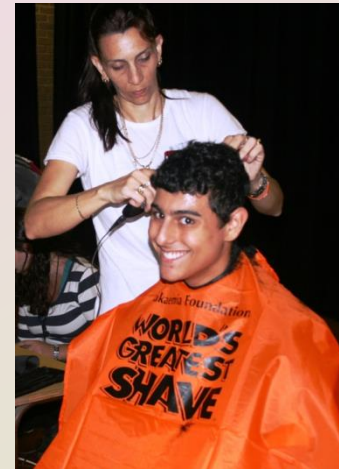
Extra curricular opportunities

Debating & Public Speaking

Performing Arts

Sport

University Partnerships



Curriculum and Extra Curricular Opportunities

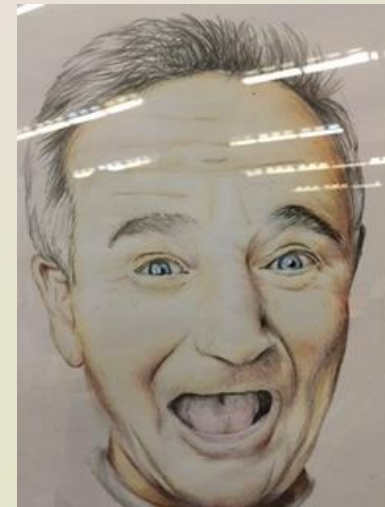


- Welfare programs
- Prefects
- Peer support
- Duke of Edinburgh
- STEM
- Technology
- Environment Group
- Band
- Interact

Performing Arts



Art Exhibition



SPORT



Important Dates

- ▶ 11th March EOIs distributed to Year 6 parents
- ▶ 12th March Selective High School Placement Test
- ▶ 20th March EOIs returned to primary school
- ▶ Commencement of EOI to local or Choice 1 non local schools (application process on MHS website)
- ▶ 7th April last day to forward EOI to local and Choice 1 non local schools
- ▶ Early / Mid May Panel meets
- ▶ 29th May enrolments begin
- ▶ 3rd July first round offers for selective high schools
- ▶ 1st December Orientation day



Communication

- ▶ Parent Sentral Portal
- ▶ Community Focus Group Meetings
- ▶ Newsletters
- ▶ Website
- ▶ Email
- ▶ SMS
- ▶ Facebook
- ▶ Communication and Behaviour Code for Parents, Carers and Visitors.

