

Positive Relationships
Positive Outcomes

Welcome to Moorebank

High School

Year 6 2021

INFORMATION EVENING

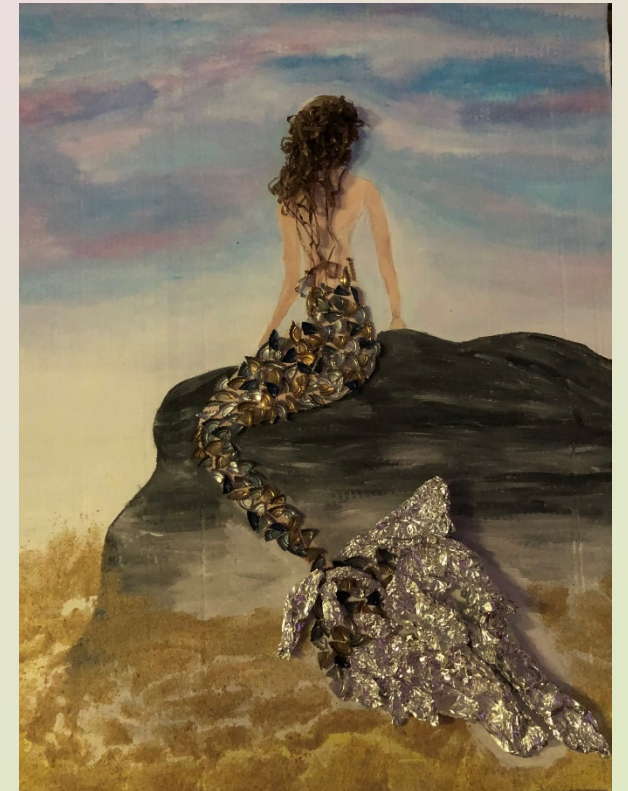


Our School

Positive Relationships Positive Outcomes

Inclusive, Cohesive & Positive

- ▶ Selective and comprehensive high school
- ▶ 1046 students
- ▶ 100 staff – teaching and ancillary
- ▶ 78% EAL/D
- ▶ Situated in a very unique environment
- ▶ Very strong partnerships with our community, in particular our partner primary schools, local industry, TAFE and universities
- ▶ Strongly encourage parental participation in sharing their child's learning and value input into school planning
- ▶ We value learning and celebrate student achievement
- ▶ Strongly advocate for student leadership and student voice



Our Vision Statement



- Our guiding principle, positive relationships, positive outcomes will lead and support staff to enhance effective, evidence-based practices in teaching and learning. Through enabling positive relationships, all students will be provided with opportunities to become empowered, responsible, active and generous citizens. Positive outcomes will be enhanced by establishing a culture of high expectations, explicit teaching and effective feedback to optimise the learning outcomes of all students and develop mindsets that value the pursuit of lifelong learning.



Our direction for the next four years

Strategic Direction 1: Student Growth and Attainment

Our purpose is to ensure students grow in their learning through explicit, consistent and evidence-based teaching practice. The school will embed quality literacy and numeracy practices informed by data analysis for students to meet set targets

Strategic Direction 2: Effective Classroom Practice

Our purpose is to foster quality teaching and learning environments. This will be driven by the school's guiding principle of Positive Relationships Positive Outcomes (PRPO) and grounded in evidence-based practices.

Strategic Direction 3: Assessment and Feedback

Our purpose is to challenge and extend students through quality assessment practices. Whilst empowering staff to flexibly and responsibly use assessment as an integral part of daily classroom instruction.

Our Staff

Principal

Ms Grego

Deputy Principals

Dr Griffin / Ms Richards

Mr Sansom

Ms Baghdadai/Ms Skelton

Head Teachers

- ▶ HT Administration – Mr D Clark
- ▶ HT CAPA – Mr Cardillo-Zallo
- ▶ HT English – Ms Carney
- ▶ HT HSIE - Ms Skelton / Ms Christos
- ▶ HT Mathematics – Ms Nguyen
- ▶ HT PDHPE - Ms Xenakis
- ▶ HT Secondary Studies – Ms Cooper
- ▶ HT Science – Mr Vickers
- ▶ HT TAS– Mr S Clark
- ▶ HT Teaching and Learning - Ms Paring
- ▶ HT Wellbeing - Ms Rombi
- ▶ SAM – Ms Nicholls
- ▶ Business Manager – Tanya Hilaire



MHS Expectations and Values



➤ Our school also has five core expectations that help us to realise that learning is our number one value. These expectations express what we believe and how we behave, and are encapsulated in the honourable word, BRAVE. The expectations are:

- **B**e generous
- **R**espectful and responsible
- **A**ct safely
- **V**alue learning and
- **E**xcellence

Pride in the School & Student Achievements

Advanced programming /
assessment for giftedness

Range of leadership programs

Extra curricular opportunities

Debating & Public Speaking

Performing Arts

Sport

University Partnerships



Curriculum and Extra Curricular Opportunities

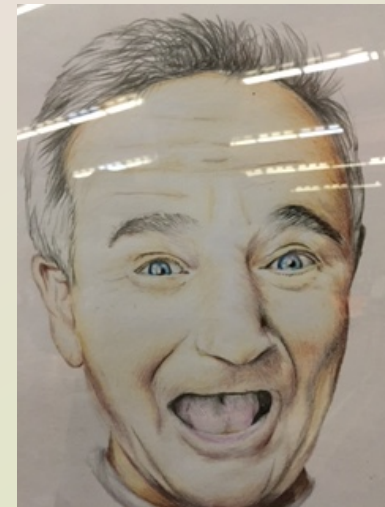


- Welfare programs
- Prefects
- Peer support
- Duke of Edinburgh
- STEM
- Technology
- Environment Group
- Band
- Interact/charity

Performing Arts



Art Exhibition



SPORT



Important Dates

- ▶ 11th March EOIs distributed to Year 6 parents
- ▶ 11th March Selective High School Placement Test
- ▶ 19th March EOIs returned to primary school
- ▶ Commencement of EOI to local or Choice 1 non local schools (application process on MHS website)
- ▶ 31st March last day to forward EOI to local and Choice 1 non local schools
- ▶ Early / Mid May Panel meets
- ▶ 25th May enrolments begin
- ▶ Early July first round offers for selective high schools
- ▶ 23rd November Orientation day
- ▶ Additional days for student class placement assessment TBA after orientation day



Communication

- ▶ Parent Sentral Portal
- ▶ Community Focus Group Meetings
- ▶ Newsletters
- ▶ Website
- ▶ Email
- ▶ SMS
- ▶ Facebook
- ▶ Communication and Behaviour Code for Parents, Carers and Visitors.

